

BONASTRE

LOOKBOOK FALL-WINTER 2025



CONTENTS

Rider	3
10 Rue du Perche	9
Airbag	15
Bon-Bon	19
Ring Crossbody	26
Lovni	30
T	34
Cloud	39
Small leather accessories	44
 Linesheet - Prices	 50



RIDER M

The RIDER line mirrors the silhouette of a skateboard rink and is inspired by Brutalism, the architectural movement of the 1950s and 60s. Its smooth lines fit perfectly against the body, and the shoulder strap, designed like a belt, adjusts with ease. The RIDER M can be worn on the shoulder, or crossbody and fits a 13" laptop.





Wine
Terra
Taupe
Black

BN 172
BN 171

Rider Bag M
Rider Bag S

42 × 24 × 7 cm
35 × 20,5 × 6 cm

5



Grained Black

RIDER S

The RIDER line mirrors the silhouette of a skateboard rink and is inspired by Brutalism, the architectural movement of the 1950s and 60s. Its smooth lines fit perfectly against the body, and the shoulder strap, designed like a belt, adjusts with ease. The RIDER M can be worn on the shoulder, or crossbody and fits a 13" laptop.



BN 171

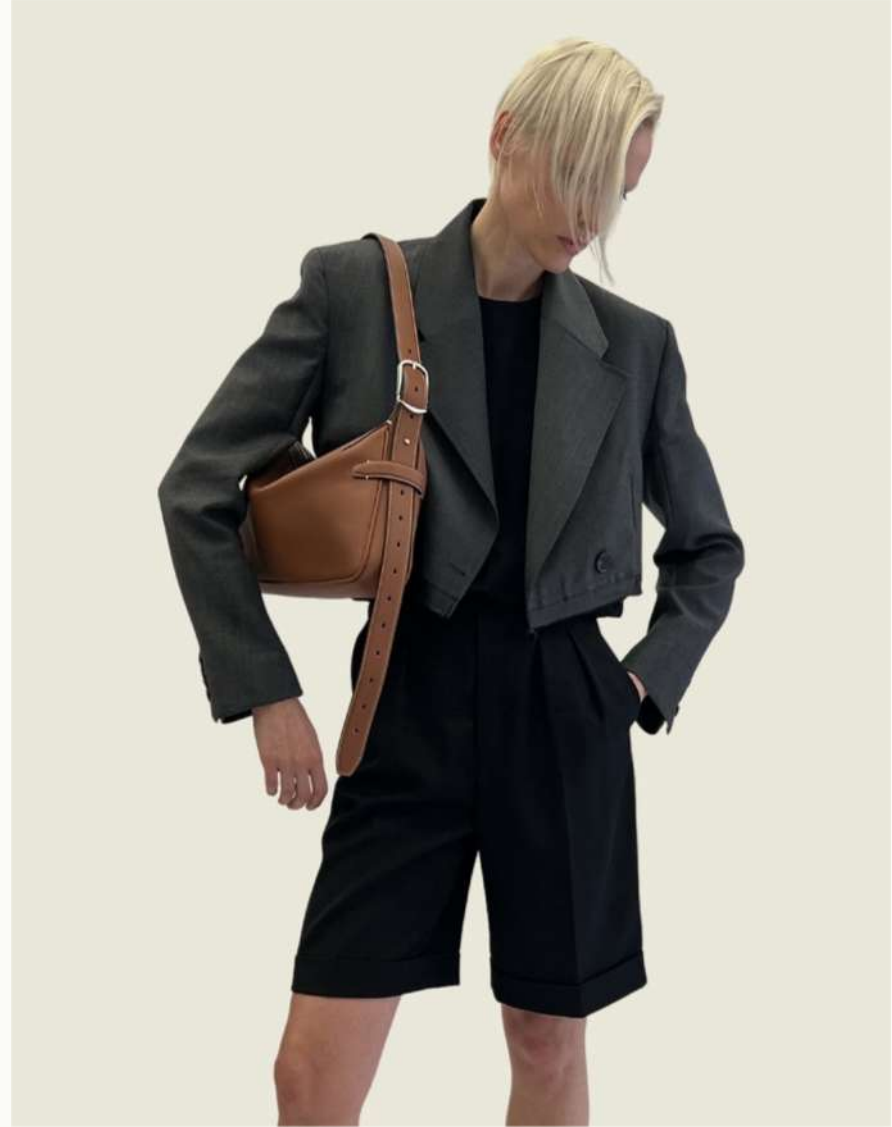
Rider Bag S

35 × 20,5 × 6cm

7



Wine
Terra
Taupe
Black





BN 179

10 Rue du Perche L

46 × 54 cm

9

10 RUE DU PERCHE L

The 10 Rue du Perche is a light-weight minimal tote bag. Available in small and large sizes. The name refers to Bonastre's flagship store in the Marais in Paris. The newest version is a reversible one.



Shiny Fuoco
Shiny Black

BN 197

10 Rue du Perche L - 46 × 54 cm
REVERSIBLE

11



Shiny Fuoco x
Shiny Black

10 RUE DU PERCHE S

The 10 Rue du Perche is a light-weight minimal tote bag. Available in small and large sizes. The name refers to Bonastre's flagship store in the Marais in Paris. The newest version is a reversible one.





Shiny Fuoco
Shiny Black



Shiny Fuoco x
Shiny Black



AIRBAG S

The AIRBAG Line has one key specificity: everything in this style is detachable, including the handles, straps and pads, in order to allow the design to fold flat. Referencing the automotive industrial design, once you construct the AIRBAG by fastening the pads on the sides, it inflates naturally.



Wine
Terra
Taupe
Black

AIRBAG M

The AIRBAG Line has one key specificity: everything in this style is detachable, including the handles, straps and pads, in order to allow the design to fold flat. Referencing the automotive industrial design, once you construct the AIRBAG by fastening the pads on the sides, it inflates naturally.





Wine
Terra
Taupe
Black



BON-BON CORDS

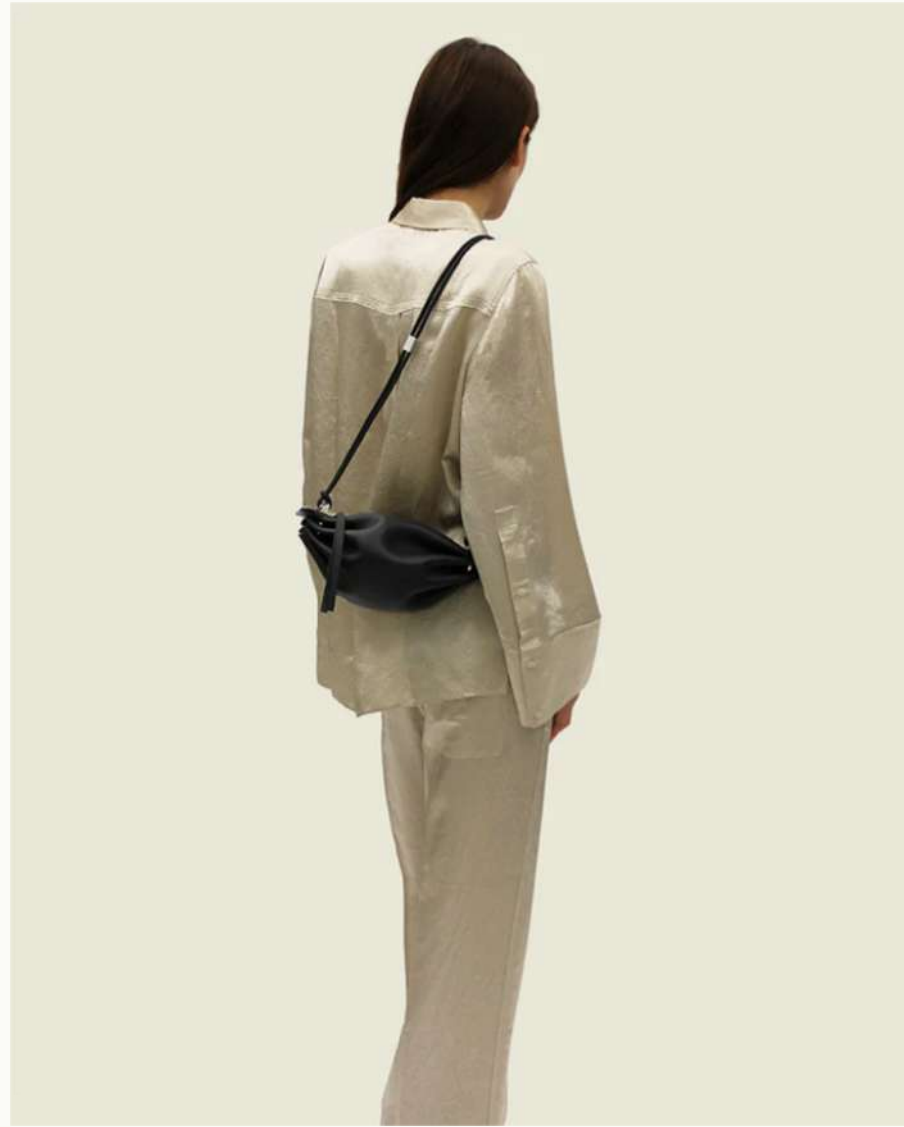
Inspired by the shape of traditional wrapped candy, the BON-BON has a unique charm and character, which makes it rather sweet and desirable. With its supple contours allowing each bag to embrace your body shape, the BON BON is the leather equivalent of a delicious sugar rush. It is playful, butter-soft and unpretentious.

The BON-BON keeps your hands free, allowing for maximum comfort and freedom of movement. It can be worn crossbody, on the shoulder, or like a rucksack against your chest and back.

Buttery soft leather meets at each pleated end, held together by a beautiful solid metal clasp that also holds the double cords that represent the newest version of the Bon-Bon.



Shiny Fuoco
Shiny Black





BON-BON

Inspired by the shape of traditional wrapped candy, the BON-BON has a unique charm and character, which makes it rather sweet and desirable. With its supple contours allowing each bag to embrace your body shape, the BON BON is the leather equivalent of a delicious sugar rush. It is playful, butter-soft and unpretentious.

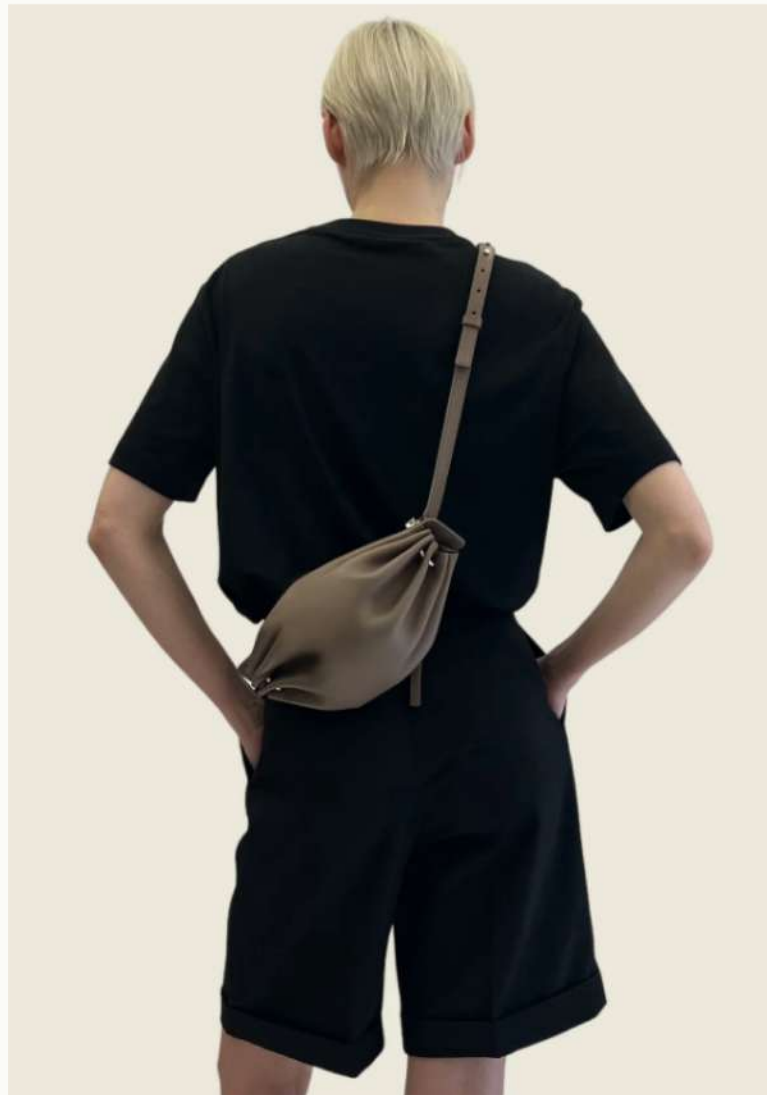
The BON-BON keeps your hands free, allowing for maximum comfort and freedom of movement. It can be worn crossbody, on the shoulder, or like a rucksack against your chest and back. It has an adjustable leather strap.



Wine
Cream
Terra
Taupe
Black

BON-BON LASERCUT





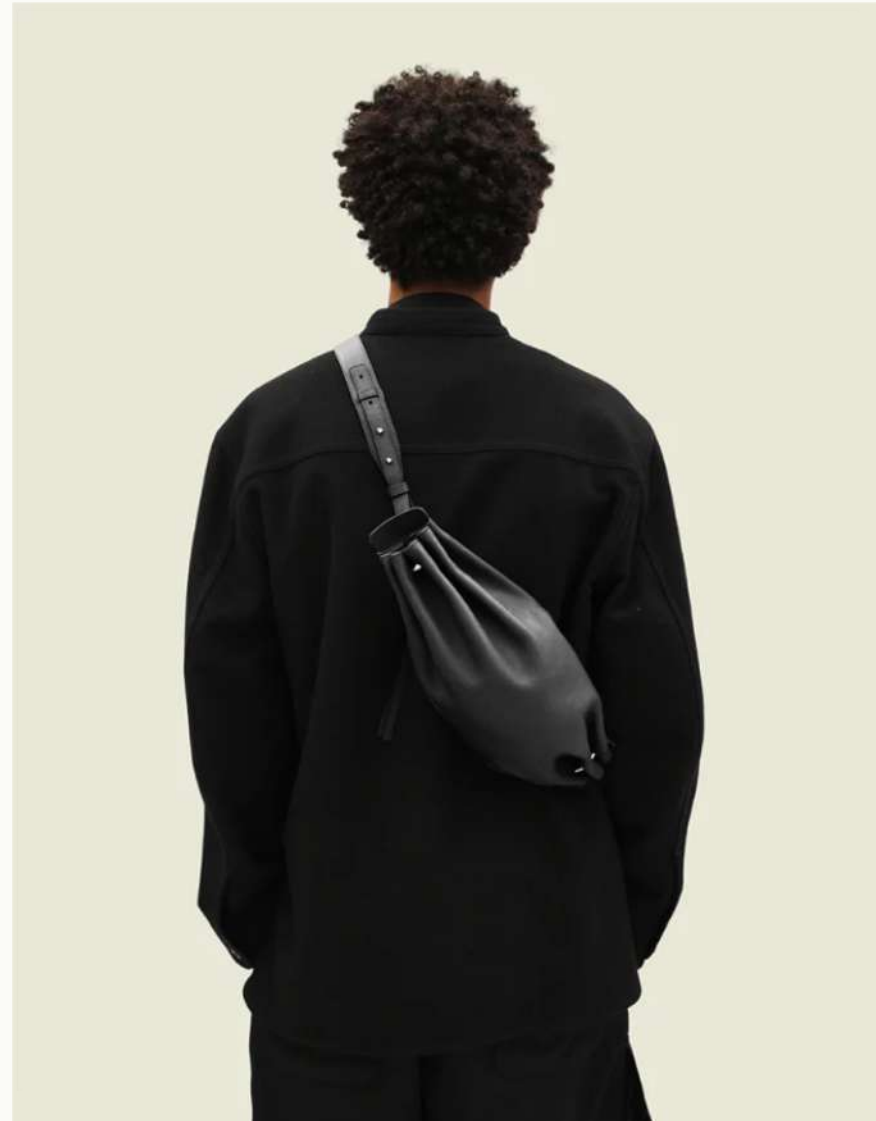
RING CROSSBODY S

Inspired by Spanish designer and artist Mariano Fortuny, who is known for his timeless and intricately pleated gowns, the RING is harmonious, functional and lightweight. Its soft and supple leather is held together by solid metal clasps, which were developed exclusively for BONASTRE.

Featuring a single zip closure, the RING is meant to be worn mainly crossbody, although it sits nicely on the shoulder, or even against the body like a classic rucksack.

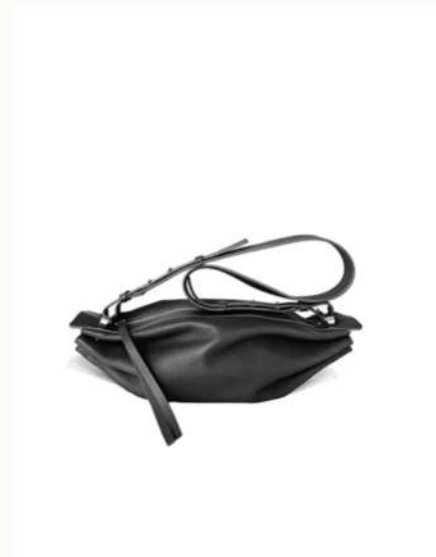
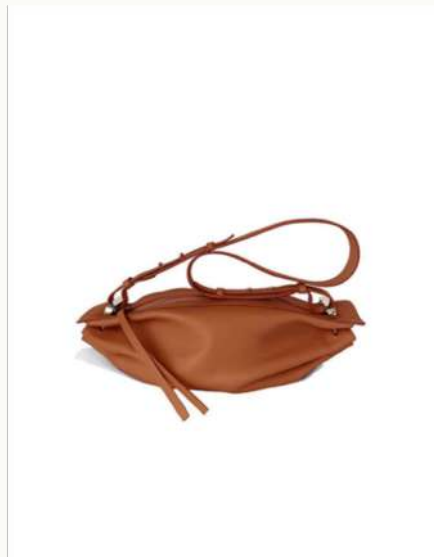
This seasonless and gender-free bag was designed in Paris and handmade in Spain, reflecting BONASTRE's architectural style and high standards of leather craftsmanship.







Shiny Fuoco
Shiny Black



Wine
Cream
Terra
Taupe
Black

LOVNI S

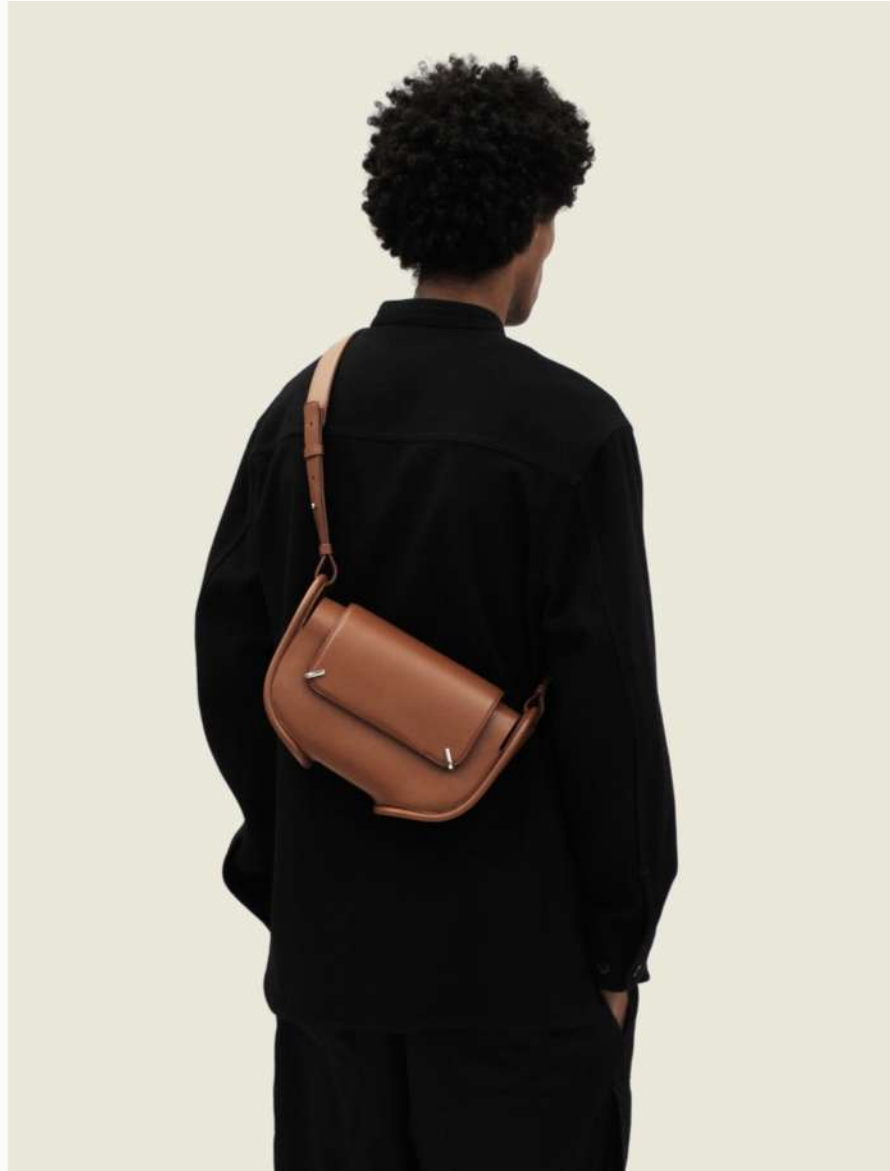
Referencing some of the key works of Spanish artist Eduardo Chillida - who was once baptized 'sculptor of the air'- the LOVNI is an impressive study in contrasts. Its generous curves make it sensual and feminine, while its metallic hooks come across as sleek, bold and futuristic.

The LOVNI is an architectural clutch with a statement padded flap.





Multico
Terra
Taupe
Black



LOVNI M

Referencing some of the key works of Spanish artist Eduardo Chillida - who was once baptized 'sculptor of the air'- the LOVNI is an impressive study in contrasts. Its generous curves make it sensual and feminine, while its metallic hooks come across as sleek, bold and futuristic.

The LOVNI is an architectural clutch with a statement padded flap.



T BUSINESS

Conceived as a contemporary reinterpretation of the classic briefcase, the T Business is an homage to the architectural wonders of Tadao Ando. Incredibly lightweight and minimalist, it boasts a sleek and functional design, making it the ideal briefcase bag for carrying your work essentials.













BN 177

Cloud Pouch

22,5 x 17 cm

39

CLOUD POUCH

Inspired by the poetic beauty of clouds, the Cloud Pouch is a simple, soft and lightweight pouch available in several colorways with an adjustable shoulder strap.



Spicy Rojo
Wine
Terra
Taupe
Cream
Black



Shiny Fuoco
Shiny Black



Taupe
Black





Spicy Rojo
Wine
Terra
Taupe
Black





Spicy Rojo
Wine
Terra
Taupe
Black





Spicy Rojo
Wine
Terra
Taupe
Black
Cream



BN 171

Rider Bag S



35 × 20,5 × 6cm

WP 208€
RRP 540€

- Black ●
- Taupe ●
- Terra ●
- Wine ●
- Grained Black ●

BN 172

Rider Bag M



42 × 24 × 7cm

WP 265€
RRP 690€

- Black ●
- Taupe ●
- Terra ●
- Wine ●
- Grained Black ●

BN 178

10 Rue du Perche S



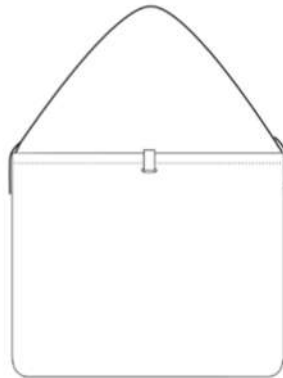
36 × 42,5 cm

WP 188€
RRP 490€

- Shiny Fuoco ●
- Shiny Black ●

BN 179

10 Rue du Perche L



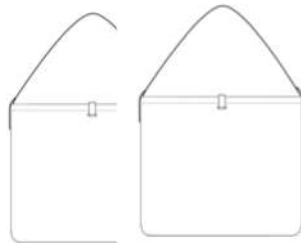
46 × 54 cm

WP 258€
RRP 670€

- Shiny Fuoco ●
- Shiny Black ●

BN 196 + BN 197

REVERSIBLE
10 Rue du Perche S + L



36 × 42,5
46 × 54 cm

WP 242€ / 323€
RRP 630€ / 840 €

- Shiny Fuoco x Shiny Black Reversible ●●

BN 160
Airbag S

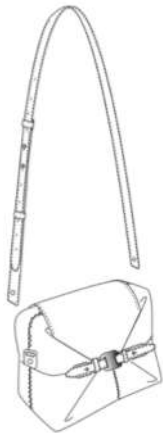


19 × 12 × 6cm

WP 188€
RRP 490€

- Black ●
- Taupe ●
- Terra ●
- Wine ●

BN 163
Airbag M

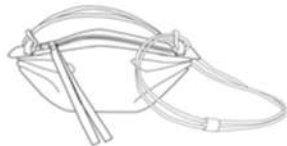


23 × 15,5 × 7,5cm

WP 227€
RRP 590€

- Black ●
- Taupe ●
- Terra ●
- Wine ●

BN 167
Bon-Bon Cords



25 × 13 × 12cm

WP 169€
RRP 440€

- Shiny Black ●
- Shiny Fuoco ●

BN 142
Bon-Bon
Bon-Bon Lasercut



25 × 13 × 12cm

WP 162€ / 229 €
RRP 420€ / 595 €

- Black ●
- Taupe ●
- Terra ●
- Cream ●
- Wine ●

BN 125
Ring Crossbody S



37 × 13 × 12 cm

WP 200€
RRP 520€

- Black ●
- Taupe ●
- Terra ●
- Cream ●
- Wine ●

BN 157
Lovni S



19 × 11 × 6 cm

WP 177€
RRP 460€

- Black
Taupe
Terra
Multico
Black Grained
- 

BN 158
Lovni M



26 × 16 × 7 cm

WP 215€
RRP 560€


- Black
Taupe
Terra
- 

BN 177
Cloud Pouch



22,5 × 17 cm

WP 112€
RRP 290€

- Black
Taupe
Terra
Cream
Wine
Spicy Rojo
- 

BN 186
Cloud Pouch with Chain

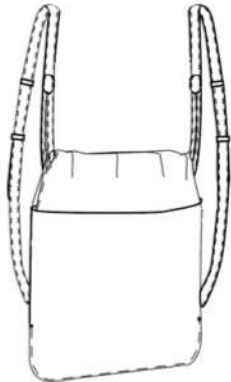


22,5 × 17 cm

WP 150€
RRP 390€

- Shiny Fuoco
Shiny Black
- 

BN 189
Cloud Backpack



34 × 40 cm

WP 238€
RRP 620€

- Black
Taupe
- 

BN 188
T Business



38 × 28 × 12 cm

WP 304€
RRP 790€

Black ●
Taupe ●

BN 192
T Tote



37 × 35 × 16 cm

WP 323€
RRP 840€

Black ●
Taupe ●

BN 187
T Backpack



30 × 40 × 12 cm

WP 342€
RRP 890€

Black ●
Taupe ●

BN 190

Isamu Pochette



13 x 20 cm

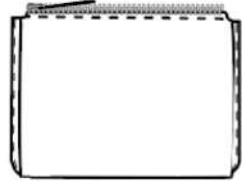
WP	88€
RRP	230€

Shiny Fuoco 

Shiny Black 

BN 190

Isamu Pochette



13 x 20 cm

WP	87€
RRP	225€

- Black
- Taupe
- Terra
- Wine
- Spicy Rojo

BN 181

Isamu Cardholder



6,5 × 11,5 cm

WP	69€
RRP	180€

Shiny Fuoco
Shiny Black

BN 181

Isamu Cardholder

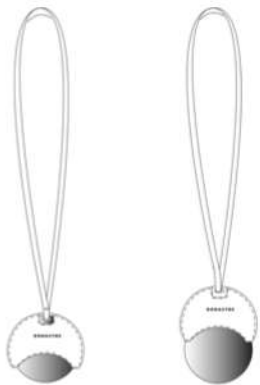


6,5 × 11,5 cm

WP	67€
RRP	175€

- Black
- Taupe
- Terra
- Wine
- Spicy Rojo

BN 191
Moon Charm



4,5 x 12 cm

WP 21€
RRP 55€

Shiny Fuoco ●
Shiny Black ●

BN 191
Moon Charm



4,5 x 12 cm

WP 21€
RRP 55€

Black ●
Taupe ●
Terra ●
Cream ●
Wine ●
Spicy Rojo ●

BN 193
Key chain



23 cm

WP 48€
RRP 125€

Shiny Fuoco ●
Shiny Black ●

B O N A S T R E