

L A M A R E

AIDAN AND ICE

SPRING  
SUMMER  
2024

An aerial photograph of a forest with a stream. The water is a vibrant, deep green, contrasting with the darker, more muted greens of the surrounding trees. The stream flows from the top left towards the bottom right, creating a clear path through the dense canopy. The overall scene is lush and natural, with the water's surface reflecting light in a way that highlights its clarity and movement.

AIDAN AND ICE

# T H E S T O R Y

Aidan and Ice Spring/Summer 2024 "LA MARE" Collection takes inspiration from the colours of coastal gardens and stunning landscapes views. The collection features delicate and whimsical designs that evoke the freshness and charm of blooming spring flowers, sound of waves and glittery sand.

The collection effortlessly combines Aidan and Ice's signature three dimensional embellishments of crystals and beads with laser-cut acrylics that were meticulously shaped into flowery ornaments, offering a unique statement of style for all jewelry enthusiasts.

Every single piece is hand-made by our artisans consisting mostly women of all ages. With years of traditions as inspirations, our eclectic pieces, ranging from necklace, brooch, earrings, hat to headbands - also reflects the modern time we live in. They can be worn and styled in different manners to elevate one's look for any time of day.

AIDAN AND ICE





RED MARIA  
EARRINGS  
*LB-RDMRA-E*



STELLA HAT  
LB-STL-HT

HONEY MARIA  
EARRINGS  
LB-HNMRA-E

HONEY PAVIA  
NECKLACE  
LB-HNPV-N



AIDAN AND ICE



GREY PAVIA  
NECKLACE  
LB-GRPV-N

AIDAN AND ICE



WHITE GELA EARRINGS  
LB-WTGL-E



ROSE GELA EARRINGS  
LB-RSGL-E



BLUE GELA EARRINGS  
LB-BLUGL-E



RED GELA EARRINGS  
LB-RDGL-E



GREEN GELA EARRINGS  
LB-GRGL-E



NAVY GELA EARRINGS  
LB-NVGL-E



WHITE GIANNA  
EARRINGS  
LB-WTGAN-E

BLUE GIANNA  
EARRINGS  
LB-BLUGAN-E



AIDAN AND ICE





BLUE GIANNA  
NECKLACE  
LB-BLUGAN-N



WHITE GIANNA  
NECKLACE  
LB-WTGAN-N

AIDAN AND ICE

GIOVANNA  
STRAW HAT  
LB-GVNN-HT

GOLDEN  
GIARDINO  
NECKLACE  
LB-GLGRN-N

AIDAN AND ICE



GOLD MORENA  
NECKLACE  
*LB-GLMRN-N*

GOLD MORENA  
BROOCH  
*LB-GLMRN-BO*

GOLD MORENA  
EARRINGS  
*LB-GLMR-E*



AIDAN AND ICE



NAVY ROSA BAG  
LB-NVRS-BG



RED ROSA BAG  
LB-RDRS-BG



BROWN ROSA BAG  
LB-BRWRS-BG



CREAM ROSA BAG  
LB-CRMRS-BG



GIOVANNA STRAW BAG  
LB-GVNN-BG



SOFIA BAMBOO BAG  
LB-SFBMB-BG



NAVY SARA  
EARRINGS  
LB-NVSR-E

AIDAN AND ICE



DOUBLE GIO  
BROOCH  
*LB-DBLGO-BO*



NAVY GELA  
BROOCH  
*LB-NVGL-BO*



GOLDEN  
GIARDINO  
BROOCH  
*LB-GLGRN-BO*



RED PAVIA  
BROOCH  
*LB-RDPV-BO*



GIOVANNA  
BROOCH  
*LB-GVNN-BO*



GREEN PAVIA  
BROOCH  
*LB-GRPVS-BO*



WHITE GELA  
BROOCH  
*LB-WTGL-BO*



HONEY PAVIA  
BROOCH  
*LB-HNPV-BO*



BLUE LILIES  
NECKLACE  
*LB-BLULLS-N*

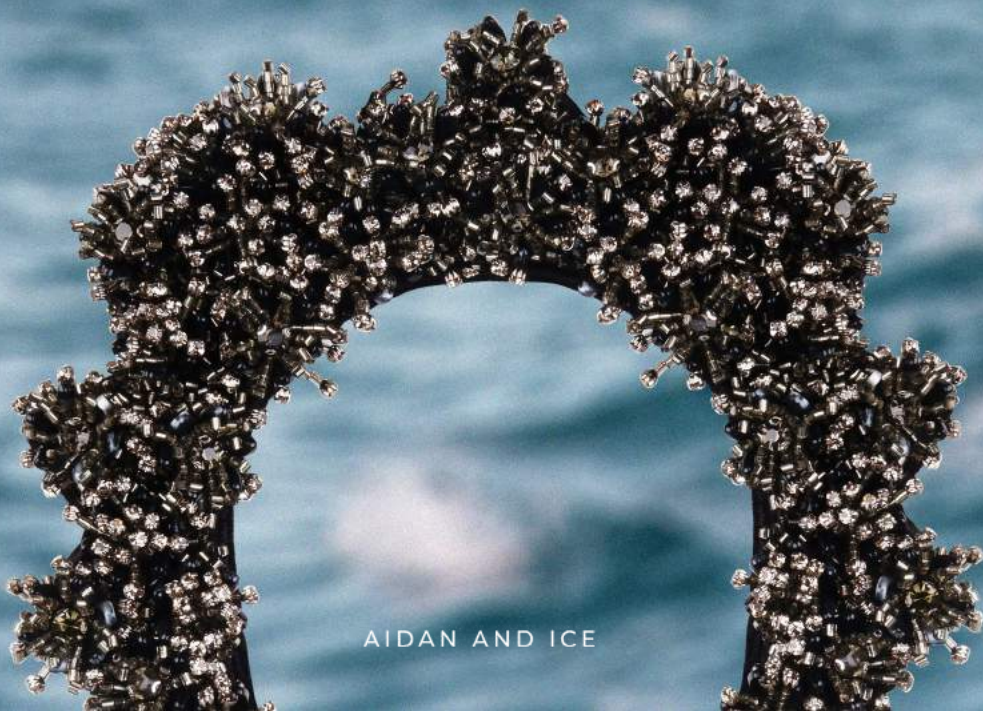
AIDAN AND ICE





NAVY LILIES  
NECKLACE  
*LB-NVLLS-N*

BLACK LILIES  
NECKLACE  
*LB-BLKLLS-N*



AIDAN AND ICE

RED ROSA  
EARRINGS  
LB-RDRS-E

RED LILIES  
NECKLACE  
LB-RDLS-N



AIDAN AND ICE



GIOVANNA EARRINGS  
LB-GVNN-E



GOLDEN GIARDINO  
EARRINGS  
LB-GLGRN-E



WHITE ROSA  
EARRINGS  
LB-WTRS-N



GREEN ROSA  
EARRINGS  
LB-GRRS-E

GREEN OCEANA  
NECKLACE  
LB-GROCN-N



AIDAN AND ICE



HONEY OCEANA  
NECKLACE  
*LB-HNOCN-N*

RED OCEANA  
NECKLACE  
*LB-RDOCN-N*

AIDAN AND ICE

WHITE ROSA  
HEADBAND  
LB-WTRS-HB

FOGLIA  
EARRINGS  
LB-FGL-E

FOGLIA  
NECKLACE  
LB-FGL-N

AIDAN AND ICE





ROSE GELA  
CHOKER  
*LB-RSGL-CK*



BLUE GELA  
CHOKER  
*LB-BLUGL-CK*



WHITE GELA  
CHOKER  
*LB-WTGL-CK*



GIOVANNA  
NECKLACE  
*LB-GVNN-N*

NAVY ROSA  
HEADBAND  
LB-NVRS-HB

NAVY ROSA  
NECKLACE  
LB-NVRS-N

AIDAN AND ICE







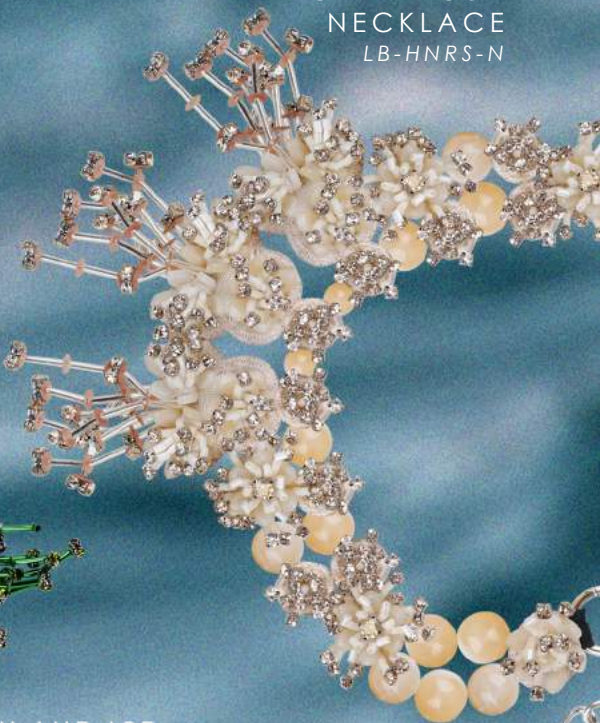
BROWN ROSA  
NECKLACE  
*LB-BWNRS-N*

The Brown Rosa Necklace features a series of large, dark brown, spherical beads. From each bead, a cluster of thin, gold-toned rods extends outwards, each ending in a small, clear, faceted crystal. The overall effect is a dense, multi-dimensional floral or starburst pattern.



RED ROSA  
NECKLACE  
*LB-RDRS-N*

The Red Rosa Necklace is composed of vibrant red, spherical beads. Similar to the Brown Rosa necklace, it features clusters of thin, red-toned rods extending from each bead, each tipped with a small, clear, faceted crystal.



HONEY ROSA  
NECKLACE  
*LB-HNRS-N*

The Honey Rosa Necklace features large, pale yellow or honey-colored spherical beads. It is adorned with clusters of thin, silver-toned rods extending from each bead, each ending in a small, clear, faceted crystal.



GREEN GIULIA  
NECKLACE  
*LB-GRGUL-N*

The Green Giulia Necklace is made of large, deep teal or emerald green, ruffled fabric-like beads. It features clusters of thin, green-toned rods extending from each bead, each ending in a small, clear, faceted crystal.

AIDAN AND ICE



BLUE TANIA KNIT HAT  
*LB-BLUTNKN-HT*



TANIA KNIT HAT  
*LB-TNKNT-HT*



BROWN GELA HAT  
*LB-BWNGL-HT*



CREME GELA HAT  
*N-CRMGL-HT*

C O N T A C T U S

Esha Butt  
*Sales Executive*

[sales@ladresseparisagency.com](mailto:sales@ladresseparisagency.com)

*General Inquiries:*

[info@ladresseparisagency.com](mailto:info@ladresseparisagency.com)

[www.ladresseparisagency.com](http://www.ladresseparisagency.com)

[www.aidanandice.com](http://www.aidanandice.com)

AIDAN AND ICE

SPRING  
SUMMER  
2024

An aerial photograph of a frozen body of water, likely a lake or river. The water is a deep, dark teal color, with intricate patterns of ice and snow. The left edge shows a rocky, brownish shoreline. The overall texture is highly detailed and organic.

AIDAN AND ICE